

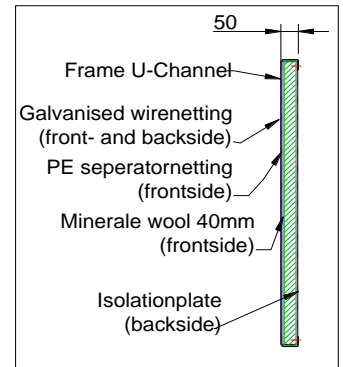
Technical Specifications NOISEREDUCER SINGLE ABSORPTION SA-45_A3



Noiseside- Absorbative PE netting and wirenetting



Backside- Coated plated and wirenetting



Dimensions and pattern NOISEREDUCER® SA-45 Noise Barrier-A3:

- Standard pattern (HEA upright): $w_{\text{pattern, standard HEA}} = \text{panelwidth: } 2.490\text{mm}$ (post distance 2500mm).
- Any other size smaller than 2,99 can be supplied
- Maximum height: $h_{\text{max}} = 3$ metres starting from ground level (2m+1m panel)
- Maximum panel Height: $h_{\text{panel, max}} = 2,50\text{m}$ (width =2,0m)
- A NoiseReducer SA-45 panel can be supplied in any desirable width and height from H=0,5m to H=2,5m.
- NoiseReducer barrier higher than 2,5m: two or more more panels are stacked

Steel Construction:

- *Style of Foundation column:*
Taking into account the barrier's height, IPE80-120, or HEA100-140 are applicable - S235 hot-dip galvanised (EN1461) with pre drilled mounting holes, diameter 8 mm,
- Foundation 90-100cm in the ground with 40-60L concrete
- Optionally two layer powder coated in any desired standard RAL colour (additional cost)

Panels: NOISEREDUCER® DA-45 Noisebarrier

- Framework made of cold-rolled U-45-45-2, profile S235, Magnelis gelavanised steel ZM310, quality standard DIN 17100.
- Frame optionally powder coated in any desired standard RAL colour (additional cost)
- Sound insulation, single number descriptor reading - NEN-EN-ISO-717-1: **Rw= 30dB(a)**. See attachment TNO Sound Insulation reading.
- Sound Absorption, single number descriptor reading - NEN-EN-ISO-717-1: **D_{1α}= 11dB(a)** - EN 1793-1, Category A3 . See attachment Peutz Sound Absorption reading.
- At the backside a plastisol coats steelplate 0,75mm, colour darkgreen RAL6007 or antracitgrey RAI7016 (20 other colours are available)
- At the frontside: a layer of 40 mineral wool, covered with a layer of PE seperator mesh 5mm, color darkgreen RAL6007 or antracitgrey RAL7016
- Optional extra HDPE windsheet 180gr/m2 between PE separator netting and wirenetting in matching colour (additional cost)
- Front- and backside: a 4 or 5mm galvanised wire netting mesh 15 x 15cm
- Mass of panels: 16-22 kg/m² depending on size
- *Dimensions panels: Standard IPE*

Standard panel :		= 2.490 x 2.000mm or 2.000 x 2.500mm
Allowable placement tolerance:	$T_{\text{pl, panel}}$	= 10 mm (in relation to w_{pattern})
Maximum width panel:	$W_{\text{panel, max}}$	= 2.990 mm (5mm netting)
Maximum height panel:	$h_{\text{panel, max}}$	= 2.500 mm (with a maximum width of 2m)

Joint materials:

- Attachment panels, per item:
6 x self-tapping hexagon shoulder screw ST.6,3 x 38 mm - DIN 7405K

Concrete gravelboard:

- Positioned under the panels for support, for limited slopes or for obtaining correct height. Enforced with 2 x concrete iron wire Ø8mm
- Dimensions Standard 2.500 x 300 x 35mm (can easily be cut with a grinder to desirable size) or 249 x 19 x 9cm

Synthetic material:

- PE separator netting 2mm, perforation 5mm, UV stabilized, colour dark green RAL6007 or anthracite RAL7016
- Subnet HDPE windsheet 180gr/m2, colour dark green RAL6007 or anthracite RAL7016
- Self adhesive expanding rubber 15/3mm between stacked panels